



SCIENCE. VALUE. INNOVATION.

## OUR STORY

TELA Bio, a surgical reconstruction company, was created out of the desire to do things differently. Combining the drive and innovation of a start-up with a seasoned medical technology team, our goals include:

- Collaborating with surgeons to address unmet clinical needs
- Creating purposefully built products
- Constructing a portfolio of products for surgeons and patients that surpasses materials currently on the market

TELA Bio is proud to introduce our first products that are designed to address shortcomings\* in soft tissue reconstruction—**OviTex® Reinforced BioScaffolds**.

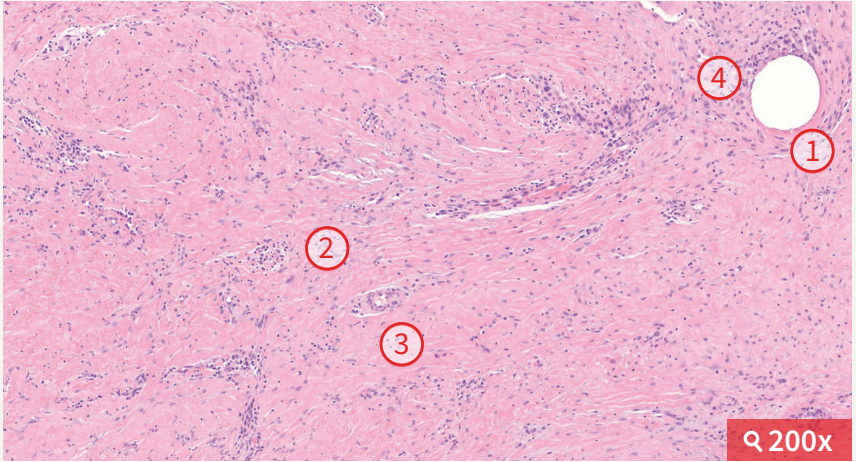
\*Based on market research input.

# TISSUE & POLYMER WORKING TOGETHER

OviTex's extracellular matrix acts as a scaffold for rapid cellular infiltration and repopulation, resulting in tissue remodeling. OviTex exhibits a controlled foreign body response localized around the embedded polymer.

## OviTex

Non-human primate data at 3 months: H&E staining



- ① Embedded polymer
- ② Organized collagen deposition
- ③ New capillary formation
- ④ Foreign-body response restricted to region around polymer

**Source:** Data on file. Correlation to results in humans has not been established.

- ▣ The strength of OviTex products meets or exceeds that of market-leading\* synthetic meshes.<sup>†</sup>
- ▣ Compliance of OviTex products is uniform in all directions and meets the requirements of the abdominal wall.<sup>†</sup>

\*IMS Hospital Supply Index, 4Q15.

<sup>†</sup>Biomechanical data on file.

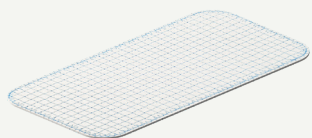
### Important Safety Information

OviTex Reinforced BioScaffolds are intended for use as a surgical mesh to reinforce and/or repair soft tissue where weakness exists. Indications for use include the repair of hernias and/or abdominal wall defects that require the use of reinforcing or bridging material to obtain the desired surgical outcome.

**Caution:** Federal law restricts this device to sale by or on the order of a physician. Do not use OviTex in patients known to be sensitive to materials of ovine (sheep) origin. For additional important safety information, please see the OviTex Reinforced BioScaffold Instructions for Use.

## RANGE OF PRODUCTS

There are three configurations of OviTex specifically for ventral hernia repair and abdominal wall reconstruction. These products are available with either **permanent (polypropylene) polymer** or **resorbable (polyglycolic acid) polymer** reinforcing the same biologic material. The information below is applicable to both permanent and resorbable lines.

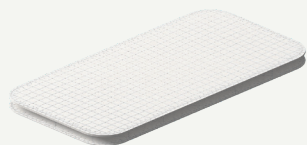


### OviTex

4-layer device, not intended for intraperitoneal placement

STRENGTH\*: +

VISCERA CONTACT †: Not recommended

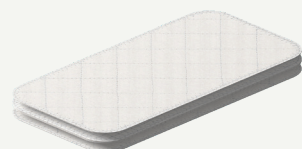


### OviTex 1S

6-layer device, with “smooth side” suitable for intraperitoneal placement

STRENGTH\*: ++

VISCERA CONTACT †: Yes



### OviTex 2S

8-layer device, with 2 “smooth sides” suitable for intraperitoneal placement

STRENGTH\*: +++

VISCERA CONTACT †: Yes

Products may not be available in all markets because product availability is subject to the regulatory and/or medical practices in individual markets. Please contact your TELA Bio representative if you have questions about TELA Bio products.

\*Biomechanical data on file.

†OviTex 1S and OviTex 2S were shown to not adhere in an animal model. Rabbit data on file. Correlation to results in humans has not been established.

Images represent permanent polymer OviTex products. Resorbable polymer products have clear polymer.

### Important Safety Information (continued)

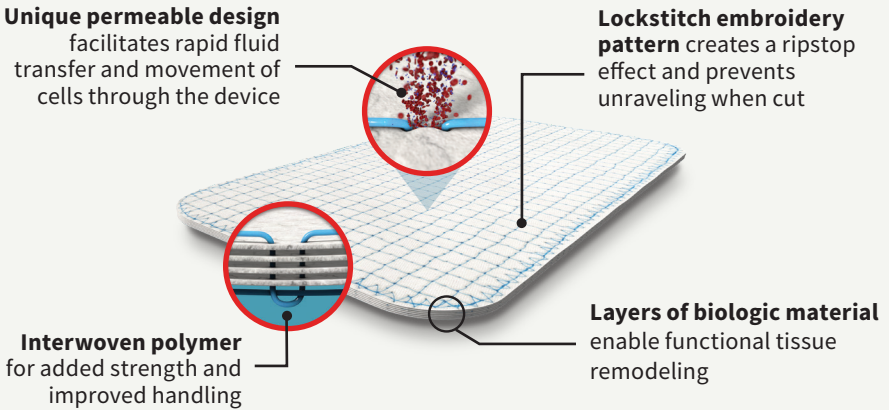
Asurgeon must use his or her own clinical judgment when deciding which products are appropriate for treatment of a particular patient. Always refer to the package insert, product label, and/or instructions for use before using any TELA Bio product. Products may not be available in all markets because product availability is subject to the regulatory and/or medical practices in individual markets. Please contact your TELA Bio representative if you have questions about TELA Bio products.

TELA Bio® and OviTex® are registered trademarks of TELA Bio, Inc.

Literature Number: MK-PM-0001 Revision 01 (December 2018)

## OVITEX: REINFORCED BIOSCAFFOLDS

Reinforced BioScaffolds are not just biologic or synthetic. They are implants purposefully designed for use in hernia repair and abdominal wall reconstruction.



- ❑ Biologic building block: An intact extracellular matrix (ECM) derived from ovine (sheep) rumen.
- ❑ OviTex demonstrates load-sharing properties: Polymer and biologic materials are interwoven to provide the product's signature strength.
- ❑ Embedding polymer in the ECM increases the initial strength of OviTex by ~25%.\*
- ❑ The embroidered construction of OviTex creates hundreds of pores, allowing for fluid transfer through the device.
- ❑ The layered construct of OviTex is shown to integrate within 4 weeks with no evidence of interlayer seroma.†
- ❑ OviTex products are trimmable.

\* Uniaxial tensile strength mechanical data on file. Correlation to results in humans has not been established.

† Data on file from a non-human primate study. Correlation to results in humans has not been established.

## ORDERING OVITEX? CONTACT US

OVITEX SKUs			
Family	Size (cm)	Permanent	Resorbable
OviTex	4 x 8	F10244-0408P	F10254-0408G
OviTex	6 x 10	F10244-0610P	F10254-0610G
OviTex	10 x 12	F10244-1012P	F10254-1012G
OviTex	10 x 20	F10244-1020P	F10254-1020G
OviTex	16 x 20	F10244-1620P	F10254-1620G
OviTex	18 x 22	F10244-1822P	F10254-1822G
OviTex	20 x 20	F10244-2020P	F10254-2020G
OviTex	25 x 30	F10244-2530P	-
OviTex	25 x 40	F10244-2540P	-
OviTex 1S	4 x 8	F10246-0408P	F10256-0408G
OviTex 1S	6 x 10	F10246-0610P	F10256-0610G
OviTex 1S	10 x 12	F10246-1012P	F10256-1012G
OviTex 1S	10 x 20	F10246-1020P	F10256-1020G
OviTex 1S	16 x 20	F10246-1620P	F10256-1620G
OviTex 1S	18 x 22	F10246-1822P	F10256-1822G
OviTex 1S	20 x 20	F10246-2020P	F10256-2020G
OviTex 1S	25 x 30	F10246-2530P	-
OviTex 1S	25 x 40	F10246-2540P	-
OviTex 2S	4 x 8	F10248-0408P	F10258-0408G
OviTex 2S	6 x 10	F10248-0610P	F10258-0610G
OviTex 2S	10 x 12	F10248-1012P	F10258-1012G
OviTex 2S	10 x 20	F10248-1020P	F10258-1020G
OviTex 2S	16 x 20	F10248-1620P	F10258-1620G
OviTex 2S	18 x 22	F10248-1822P	F10258-1822G
OviTex 2S	20 x 20	F10248-2020P	F10258-2020G
OviTex 2S	25 x 30	F10248-2530P	-
OviTex 2S	25 x 40	F10248-2540P	-

We're happy to offer you assistance in choosing the right OviTex product. For more information on OviTex products, including pricing information, please contact your TELA Bio customer service representative.

**FOR GENERAL INFORMATION:**

PHONE: 1-844-TELABIO (1-844-835-2246)

EMAIL: [customerservice@telabio.com](mailto:customerservice@telabio.com)

HOURS: Monday – Friday 8:30AM – 5:30PM (EST)

[www.TELABIO.com](http://www.TELABIO.com)